



**W216**

**Copy key without key**

**CG-MB**

CGDI-MB OAS 4 19 88

**EIS**

Read/Write Key

Compute Password

Generate EE

Auto Computer

ELV

### EIS Basic Information

SSID: CO 70 76 22 VIN: WDDNG9FB8AA354302 Write

EIS number: 2169050000 Mileage: 0 KM

The last key used: 4 The penultimate used: Unused

Allow Modify

---

### EIS Key Basic Information

Key	Hex	Used	Disabled
Key 1	24 4F DD FO 8B 82 E7 DB	<input checked="" type="checkbox"/>	<input type="checkbox"/>
Key 2	BA 95 E6 41 84 82 2A 2A	<input checked="" type="checkbox"/>	<input type="checkbox"/>
Key 3	16 25 7A 9F B1 22 BB D9	<input checked="" type="checkbox"/>	<input type="checkbox"/>
Key 4	60 D9 56 18 F8 C2 CF 44	<input checked="" type="checkbox"/>	<input type="checkbox"/>
Key 5	4F 4C 4C 32 5E 9D C4 98	<input checked="" type="checkbox"/>	<input type="checkbox"/>
Key 6	EE DE 8D 2F 28 DE 3B E3	<input type="checkbox"/>	<input type="checkbox"/>
Key 7	FF D4 F5 91 D0 E2 9D 6F	<input type="checkbox"/>	<input type="checkbox"/>
Key 8	C7 EC B2 A0 C3 3B 7F A1	<input type="checkbox"/>	<input type="checkbox"/>

Key password: Copy Paste

Special key: 03 6C 9C 1A 12 26 7F 96

Erase password: Get

Enable Password: Get

Initialized  Personalized

TP cleared  Activated

Dealer EIS  FBS4

Read EIS Data

Save EIS Data

Load EIS Data

Write EIS Data

Wipe the EIS

Clear TP Protection

Activate EIS

Disable Enable

Sync W204 ELV

Read success!

The vehicle should maintain enough power, connect OBD ,read the EIS data.

CGDI-MB OAS 4 19 88

EIS

Read/Write Key

**Compute Password**

Generate EE

Auto Computer

ELV

### Collect Data and Upload the File

EIS Type:

1.Waiting to read the EIS data  
2.Insert the Simulation Key into the EIS  
3.Start collecting, it will take a long time, do not disconnect the device  
4.Collection complete, please save data, then click Upload Data

Copy key with key  
 **Copy key without key**

Collect Data

Upload Data

Query Result

Auto Refresh

### Query the Server and Wait For the Results

Key password  Copy

Operation Tip:  
1. Please choose the way to collect the key first, and then click the 'Collect Data' button  
2. After the collection is completed, click the 'Upload Data' button to upload the collected data  
3. Click the 'Query Result' button and check the 'Auto Refresh' option, the program will start the automatic query.

**Go to“compute password”, choose“copy key without key”**



EIS



Read/Write Key



Compute Password



Generate EE



Auto Computer



ELV

### Collect Data and Upload the File

EIS Type:

- 1.Waiting to read the EIS data
- 2.Insert the Simulation Key into the EIS
- 3.Start collecting, it will take a long time, do not disconnect the device
- 4.Collection complete, please save data, then click Upload Data

### Query the Server and Wait For the Results

Key password

Operation Tip:

1. Please choose the way to collect the key first, and then click the 'Collect Data' button
2. After the collection is completed, click the 'Upload Data' button to upload the collected data
3. Click the 'Query Result' button and check the 'Auto Refresh' option, the program will start the automatic query.

 Copy key with key Copy key without key

Collect Data



Upload Data



Query Result

 Auto Refresh

**Click“collect data”**

- EIS
- Read/Write Key
- Compute Password
- Generate EE
- Auto Computer
- ELV

Collect Data and Upload the File

EIS Type:

W216

- 1.Waiting to read the EIS data
- 2.Start to collect ...
- 3.Follow the prompts to insert the key into the EIS or pull out.
- 4.Collection c

Tips  
Please insert the simulation key within 1 minute, if you have inserted, please pull out and try again ...

Query the Se  
Key passwor

The vehicle voltage is 12.01V

- Copy key with key
- Copy key without key



Auto Refresh

y within 1 minutes, if you have inserted, please pull out and try again ...

**Connect simulation key, insert into EIS**



**Physical operation diagram**

**EIS**

**Read/Write Key**

**Compute Password**

**Generate EE**

**Auto Computer**

**ELV**

### Collect Data and Upload the File

EIS Type:  
W216

1. Waiting to read the EIS data
2. Start to collect it will take a long time do not disconnect the device
3. Follow the prompts to insert the key into the EIS or pull out.
4. Collection complete

Tips

Please pull out the simulation key within 1 minutes!

Query the Set  
Key password

The vehicle voltage is 12.01V

0%

Please pull out the simulation key within 1 minutes!

Copy key with key

Copy key without key

Collect Data

Upload Data

Query Result

Auto Refresh

**Please pull out the simulation key within 1 minute**

CGDI-MB OAS 4 20 85

EIS

Read/Write Key

Compute Password

Generate EE

Auto Computer

ELV

Collect Data and Upload the File

EIS Type:  
W216

1.Waiting to read the EIS data  
2.Start to collect, it will take a long time, do not disconnect the device  
3.Follow the prompts to insert the key into the EIS or pull out.  
4.Collectio c

Tips

Please insert the simulation key within 1 minutes, if you have inserted, please pull out and try again ...

Copy key with key  
Copy key without key

Collect Data

Upload Data

Query Result

Auto Refresh

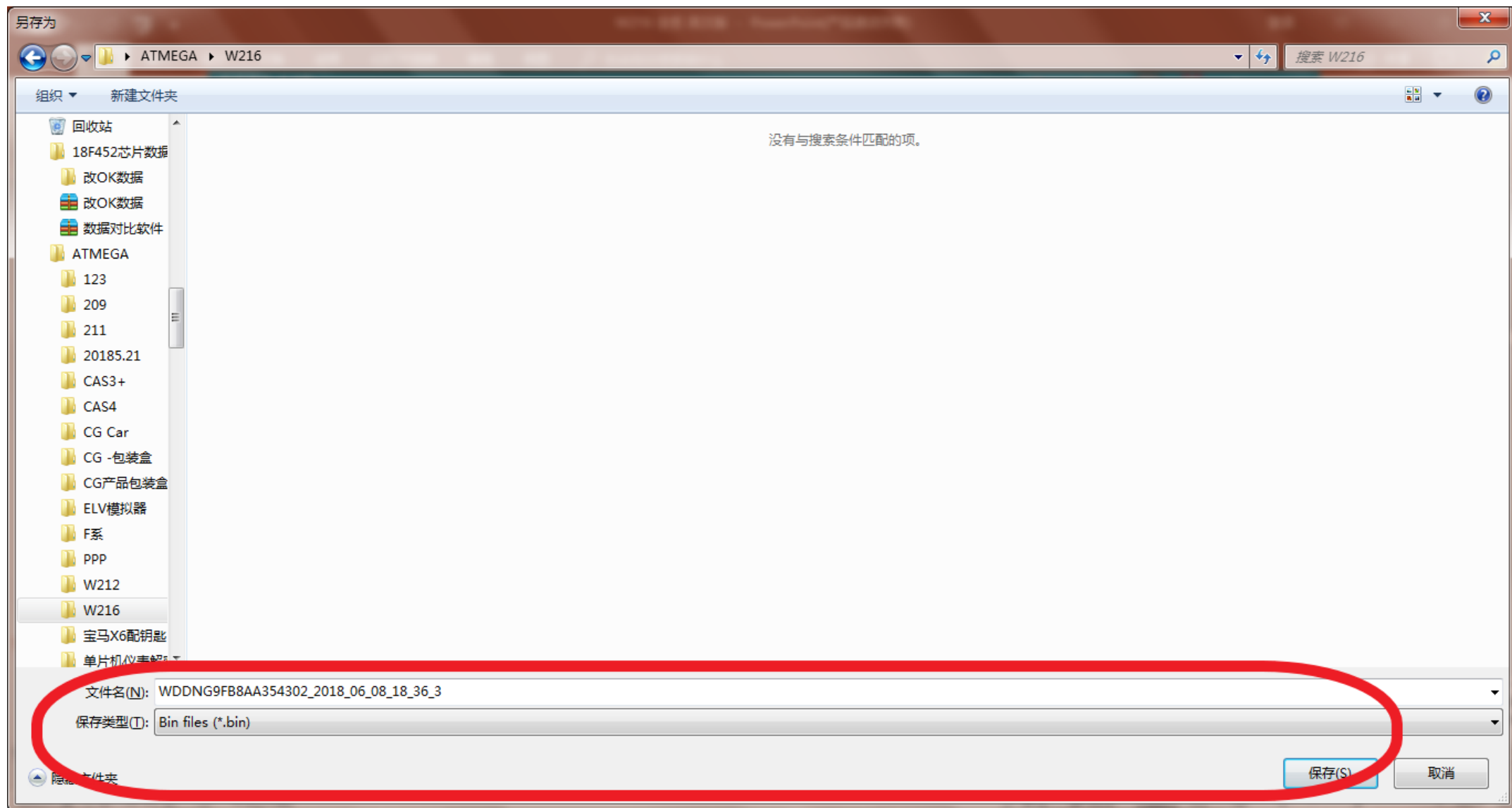
0%

y within 1 minutes, if you have inserted, please pull out and try again ...

**Please insert the simulation key within 1 minute**



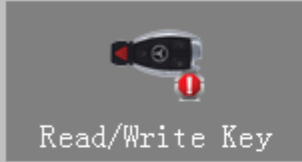
**大概插拔400次，耗时60分钟  
请提前给车辆外接电源，保持电  
压稳定**



**Collection success, save data, default file name**



EIS



Read/Write Key



Compute Password



Generate EE



Auto Computer



ELV

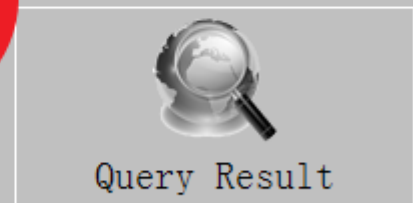
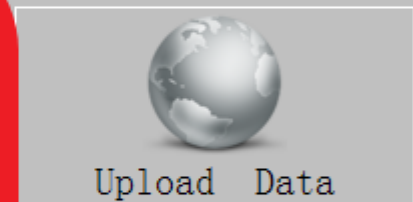
### Collect Data and Upload the File

EIS Type:

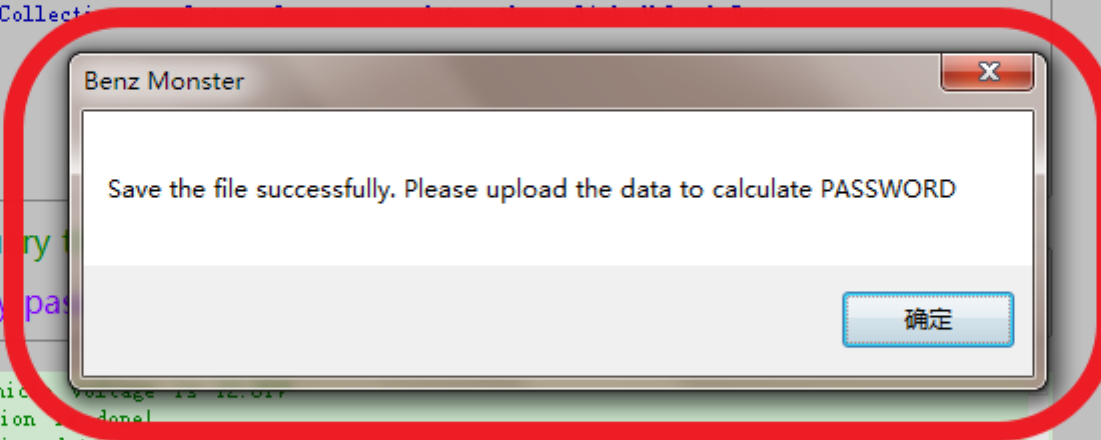
W216

- 1.Waiting to read the EIS data
- 2.Start to collect, it will take a long time, do not disconnect the device
- 3.Follow the prompts to insert the key into the EIS or pull out.
- 4.Collecti...

- Copy key with key
- Copy key without key



- Auto Refresh



Query t  
Key pas  
The vehicle voltage is 12.017  
Collection done!  
Processing data ...  
Save the file successfully. Please upload the data to calculate PASSWORD

100%

Collect data to save file successfully!

**Save the file successfully, Click ok**



EIS



Read/Write Key



Compute Password



Generate EE



Auto Computer



ELV

### Collect Data and Upload the File

EIS Type:

W216

- 1.Waiting to read the EIS data
- 2.Start to collect, it will take a long time, do not disconnect the device
- 3.Follow the prompts to insert the key into the EIS or pull out.
- 4.Collection complete, please save data, then click Upload Data

### Query the Server and Wait For the Results

Key password

Copy

```
The vehicle voltage is 12.01V
Collection is done!
Processing data ...
Save the file successfully. Please upload the data to calculate PASSWORD
```

 Copy key with key Copy key without key

Collect Data



Upload Data

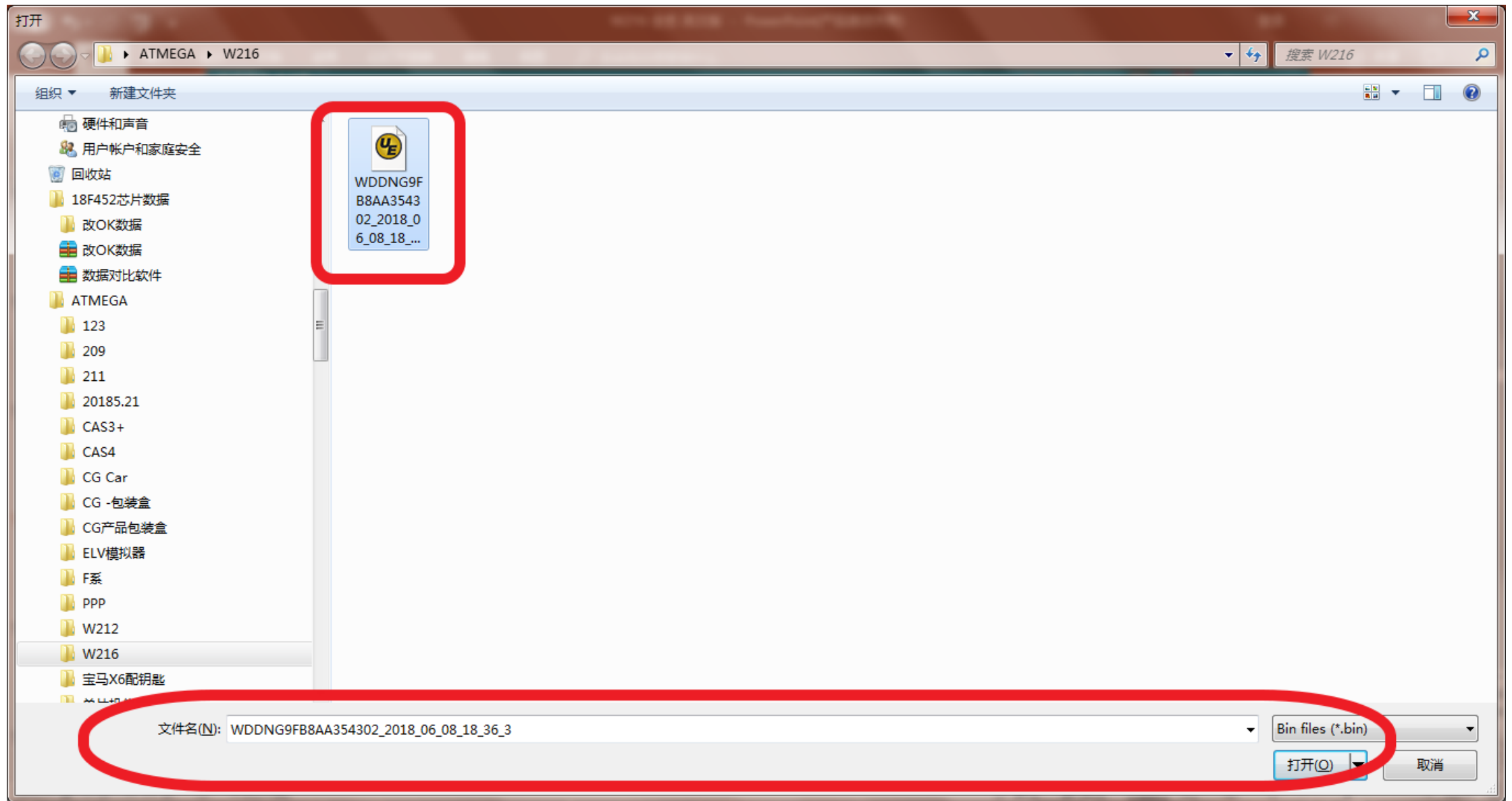


Query Result

 Auto Refresh

Collect data to save file successfully!

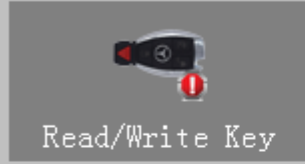
**Click“Upload Data”**



**Open the data just saved**



EIS



Read/Write Key



Compute Password



Generate EE



Auto Computer



ELV

### Collect Data and Upload the File

EIS Type:

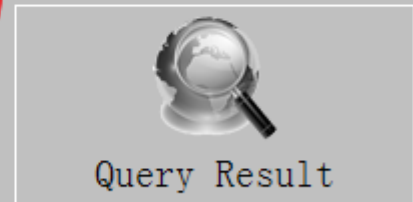
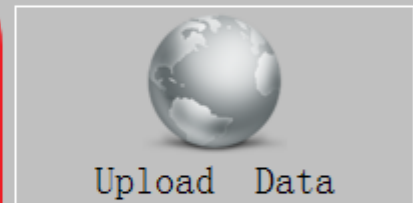
- 1.Waiting to read the EIS data
- 2.Start to collect, it will take a long time, do not disconnect the device
- 3.Follow the prompts to insert the key into the EIS or pull out.
- 4.Collect

### Query

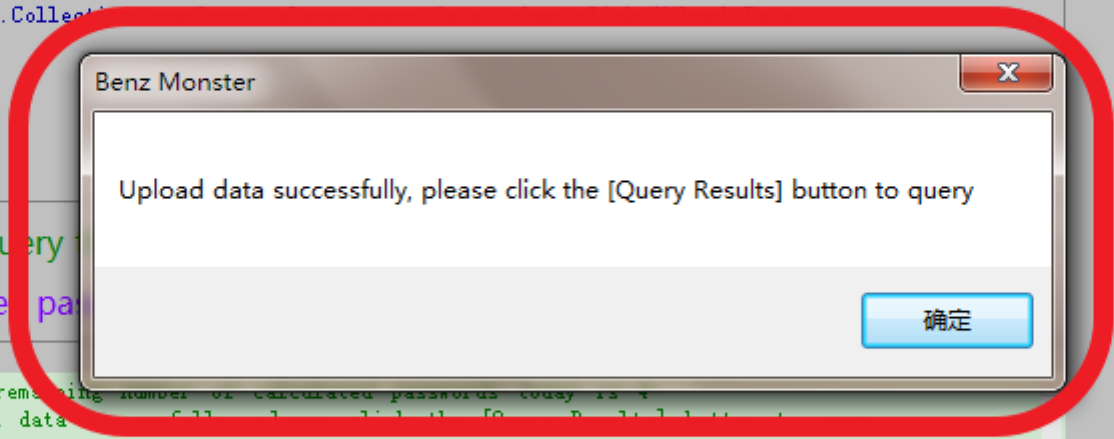
Keep pass

Your remaining number of calculated passwords today is 4  
Upload data successfully, please click the [Query Results] button to query

- Copy key with key
- Copy key without key



- Auto Refresh



Upload data successfully, please click the [Query Results] button to query

**Upload data successfully**

- EIS
- Read/Write Key
- Compute Password
- Generate EE
- Auto Computer
- ELV

Collect Data and Upload the File

EIS Type:

- 1.Waiting to read the EIS data
- 2.Start to collect, it will take a long time, do not disconnect the device
- 3.Follow the prompts to insert the key into the EIS or pull out.
- 4.Collection complete, please save data, then click Upload Data

- Copy key with key
- Copy key without key

Collect Data

Upload Data

Query the Server and Wait For the Results

Key password  Copy

```
--- query times: 1 --- Current number of queues: 1 ---  
--- Query times: 2 --- Current number of queues: 1 ---  
--- Query times: 3 --- Current number of queues: 1 ---  
--- Query times: 4 --- Current number of queues: 1 ---  
--- Query times: 5 --- Current number of queues: 1 ---  
--- Query times: 6 --- Current number of queues: 1 ---  
--- Query times: 7 --- Current number of queues: 1 ---  
--- Query times: 8 --- Current number of queues: 1 ---  
--- Query times: 9 --- Current number of queues: 1 ---
```

Query Result

- Auto Refresh

Querying ...

Click "Query Result"

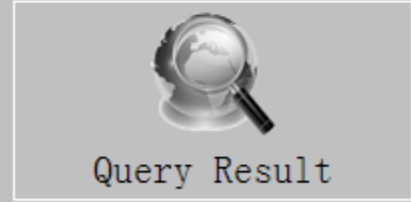
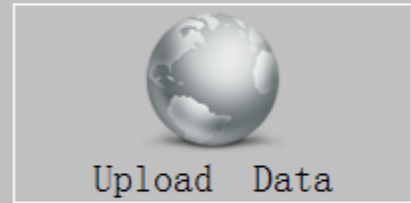
- EIS
- Read/Write Key
- Compute Password
- Generate EE
- Auto Computer
- ELV

### Collect Data and Upload the File

EIS Type:

- 1.Waiting to read the EIS data
- 2.Start to collect, it will take a long time, do not disconnect the device
- 3.Follow the prompts to insert the key into the EIS or pull out.
- 4.Collection complete, please save data, then click Upload Data

- Copy key with key
- Copy key without key



Auto Refresh

### Query the Server and Wait For the Password

Key password 4D 8D AD 4C CA EA CE 68

```
--- query times: 29 --- Calculating, please wait  
--- Query times: 30 --- Calculating, please wait  
--- Query times: 31 --- Calculating, please wait  
--- Query times: 32 --- Calculating, please wait  
--- Query times: 33 --- Calculating, please wait  
--- Query times: 34 --- Calculating, please wait  
--- Query times: 35 --- Calculating, please wait  
--- Query times: 36 --- Calculating, please wait  
Computing success!
```



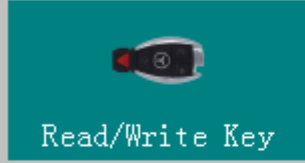
Querying ...

Query key password successfully





EIS



Read/Write Key



Compute Password



Generate EE



Auto Computer



ELV

### Collect Data and Upload the File

EIS Type:

- 1.Waiting to read the EIS data
- 2.Start to collect, it will take a long time, do not disconnect the device
- 3.Follow the prompts to insert the key into the EIS or pull out.
- 4.Collection complete, please save data, then click Upload Data

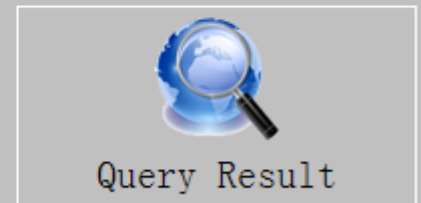
### Query the Server and Wait For the Results

Key password 4D 8D AD 4C CA EA CE 68



```
--- Query times: 29 --- Calculating, please wait ---  
--- Query times: 30 --- Calculating, please wait ---  
--- Query times: 31 --- Calculating, please wait ---  
--- Query times: 32 --- Calculating, please wait ---  
--- Query times: 33 --- Calculating, please wait ---  
--- Query times: 34 --- Calculating, please wait ---  
--- Query times: 35 --- Calculating, please wait ---  
--- Query times: 36 --- Calculating, please wait ---  
Computing success!
```

- Copy key with key
- Copy key without key



- Auto Refresh

Query end

**Copy key password**

CGDI-MB OAS 4 20 85

**EIS**

Read/Write Key

Compute Password

Generate EE

Auto Computer

ELV

### EIS Basic Information

SSID: CO 70 76 22    VIN: WDDNG9FB8AA354302    Write    Allow Modify

EIS number: 2169050000    Mileage: 0 KM    The last key used: 4    The penultimate used: Unused

### EIS Key Basic Information

	Used	Disabled	
Key 1	24 4F DD FO 8B 82 E7 DB	<input checked="" type="checkbox"/>	<input type="checkbox"/>
Key 2	BA 95 E6 41 84 82 2A 2A	<input checked="" type="checkbox"/>	<input type="checkbox"/>
Key 3	16 25 7A 9F B1 22 BB D9	<input checked="" type="checkbox"/>	<input type="checkbox"/>
Key 4	60 D9 56 18 F8 C2 CF 44	<input checked="" type="checkbox"/>	<input type="checkbox"/>
Key 5	4F 4C 4C 32 5E 9D C4 98	<input checked="" type="checkbox"/>	<input type="checkbox"/>
Key 6	EE DE 8D 2F 28 DE 3B E3	<input type="checkbox"/>	<input type="checkbox"/>
Key 7	FF D4 F5 91 D0 E2 9D 6F	<input type="checkbox"/>	<input type="checkbox"/>
Key 8	C7 EC B2 A0 C3 3B 7F A1	<input type="checkbox"/>	<input type="checkbox"/>

Key password: 4D 8D AD 4C CA EA CE 68    Copy    Paste

Special key: 03 6C 9C 1A 12 26 7F 96

Erase password:     Get

Enable Password:     Get

Initialized     Personalized  
 TP cleared     Activated  
 Dealer EIS     FBS4

Read EIS Data

Save EIS Data

Load EIS Data

Write EIS Data

Wipe the EIS

Clear TP Protection

Activate EIS

Disable    Enable

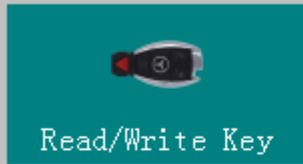
Sync W204 ELV

Read success!

Go to EIS, copy password



EIS



Read/Write Key



Compute Password



Generate EE



Auto Computer



ELV

### EIS Basic Information

SSID	VIN	Write	Allow Modify
CO 70 76 22	WDDNG9FB8AA354302		
EIS number	Mileage	The last key used	4
2169050000	0 KM	The penultimate used	Unused

### EIS Key Basic Information

	Used	Disabled		
Key 1	24 4F DD FO 8B 8 E7		EA CE 68	Copy Paste
Key 2	BA 95 E6 41 84 8 2A			
Key 3	16 25 7A 9F B1 2 BB		26 7F 96	Get
Key 4	60 D9 56 18 F8 C CF			Get
Key 5	4F 4C 4C 32 5E 91 C4			
Key 6	EE DE 8D 2F 28 DE 3B E3	<input type="checkbox"/>		
Key 7	FF D4 F5 91 D0 E2 9D 6F	<input type="checkbox"/>		
Key 8	C7 EC B2 A0 C3 3B 7F A1	<input type="checkbox"/>		

Initialized  Personalized  
 TP cleared  Activated  
 Dealer EIS  FBS4

Read EIS Data

Save EIS Data

Load EIS Data

Write EIS Data

Wipe the EIS

Clear TP Protection

Activate EIS

Disable

Enable

Sync W204 ELV

Benz Monster

Save file successfully!

确定

Save file successfully!

Save EIS data, default file name

CGDI-MB OAS 4 20 85

**EIS**

**Read/Write Key**

**Compute Password**

**Generate EE**

**Auto Computer**

**ELV**

**Load the EIS File and Confirm the PASSWORD**

SSID: CO 70 76 22  
VIN: WDDNG9FB8AA354302

Key password: 4D 8D A0 4C CA EA CE 68

**Select the Key File Format and Location to Generate**

1. Select the key file format  
2. Select generate key position  
3. Click the [Generate Key File] button to generate

V041     V051

Key 1     Key 2     Key 3     Key 4

Key 5     Key 6     Key 7     Key 8     Select All

Loading EIS file...  
Load EIS file successfully!

Load EIS file successfully!

Load EIS File

Generate Key File

**Go to “Generate EE”, Load EIS file, check the information**

CGDI-MB OAS 4 20 85

**EIS**

**Read/Write Key**

**Compute Password**

**Generate EE**

**Auto Computer**

**ELV**

**Load the EIS File and Confirm the PASSWORD**

SSID: CO 70 76 22      VIN: WDDNG9FB8AA354302

Key password: 4D 8D AD 4C CA EA CE 68

**Load EIS File**

**Generate Key File**

**Select the Key File Format and Location to Generate**

1. Select the key file format
2. Select generate key position
3. Click the [Generate Key File] button to generate

V041       V051

Key 1     Key 2     Key 3     Key 4

Key 5     Key 6     Key 7     Key 8     Select All

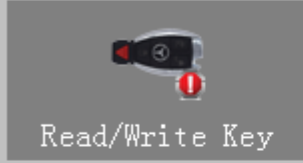
The number of times remaining for calculate EE today: 20  
--- Query times: 1 --- Current number of queues: 1 ---Probably waiting time:  
1 minutes ---

Load EIS file successfully!

**Click“Generate key file”, please wait patiently**



EIS



Read/Write Key



Compute Password



Generate EE



Auto Computer



ELV

### Load the EIS File and Confirm the PASSWORD

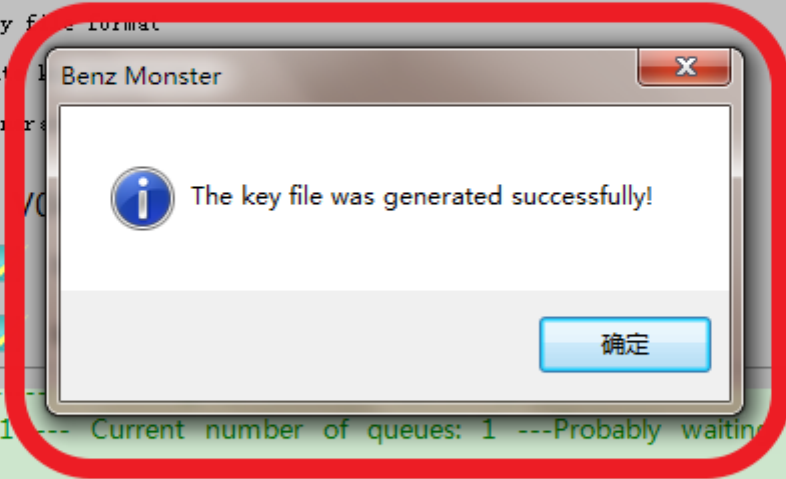
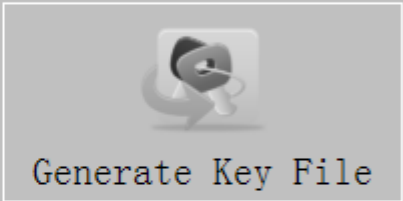
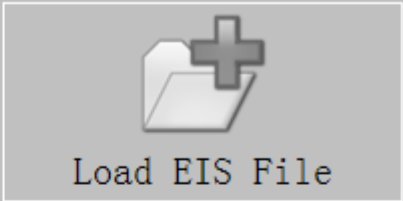
SSID	VIN
CO 70 76 22	WDDNG9FB8AA354302
Key password	
4D 8D A0 4C CA EA CE 68	

### Select the Key File Format and Location to Generate

1. Select the key file format
2. Select generate
3. Click the [Generate]

<input checked="" type="checkbox"/>	Key 1	<input checked="" type="checkbox"/>
<input checked="" type="checkbox"/>	Key 5	<input checked="" type="checkbox"/>

```
--- Query times: 1 --- Current number of queues: 1 ---Probably waiting time: 1 minutes ---  
--- Query times: 2 --- Generating, please wait ---  
--- Query times: 3 --- Generating, please wait ---  
Generating the key file, please wait ...
```



Load EIS file successfully!

The key file was generated successfully, save the file with a new folder







**Insert the new key into the equipment**



CGDI-MB OAS 4 20 85

**EIS**

**Read/Write Key**

**Compute Password**

**Generate EE**

**Auto Computer**

**ELV**

### Key Basic Information

SSID	00 00 00 00	Position	00
Available times	00	State	Activate Unused
Times used	00	Version	BE
Key password	Copy Paste	Track code	Copy

00000000 00 00 00 00 00 00 00 00 00 00 00 00 00 00 00 . . . . .

00000010 00 00 00 00 00 00 00 00 00 00 00 00 00 00 00 . . . . .

00000020 00 00 00 00 00 00 00 00 00 00 00 00 00 00 00 . . . . .

00000030 00 00 00 00 00 00 00 00 00 00 00 00 00 00 00 . . . . .

00000040 00 00 00 00 00 00 00 00 00 00 00 00 00 00 00 . . . . .

00000050 00 00 00 00 00 00 00 00 00 00 00 00 00 00 00 . . . . .

00000060 00 00 00 00 00 00 00 00 00 00 00 00 00 00 00 . . . . .

00000070 00 00 00 00 00 00 00 00 00 00 00 00 00 00 00 . . . . .

00000080 00 00 00 00 00 00 00 00 00 00 00 00 00 00 00 . . . . .

00000090 00 00 00 00 00 00 00 00 00 00 00 00 00 00 00 . . . . .

Interface:

Infrared

NEC Adapter

**Read Key/Chip**

Reset

Open/Write

Current hash

Save BE File

Read success!

**Click 'Read key', to show the key information**

EIS

Read/Write Key

Compute Password

Generate EE

Auto Computer

ELV

Key Basic Information

SSID	Position
Available times	State <span>Activate</span>
Times used	Version
Key password <span>Copy</span>	<span>Copy</span>

00000000	00 00 00 00 00 00 00 00	00 00 00 00 00 00 00 00
00000010	00 00 00 00 00 00 00 00	00 00 00 00 00 00 00 00
00000020	00 00 00 00 00 00 00 00	00 00 00 00 00 00 00 00
00000030	00 00 00 00 00 00 00 00	00 00 00 00 00 00 00 00
00000040	00 00 00 00 00 00 00 00	00 00 00 00 00 00 00 00
00000050	00 00 00 00 00 00 00 00	00 00 00 00 00 00 00 00
00000060	00 00 00 00 00 00 00 00	00 00 00 00 00 00 00 00
00000070	00 00 00 00 00 00 00 00	00 00 00 00 00 00 00 00
00000080	00 00 00 00 00 00 00 00	00 00 00 00 00 00 00 00
00000090	00 00 00 00 00 00 00 00	00 00 00 00 00 00 00 00

Benz Monster

Reset operation succeed!

确定

Interface:

Infrared

NEC Adapter

Read Key/Chip

Reset

Open/Write

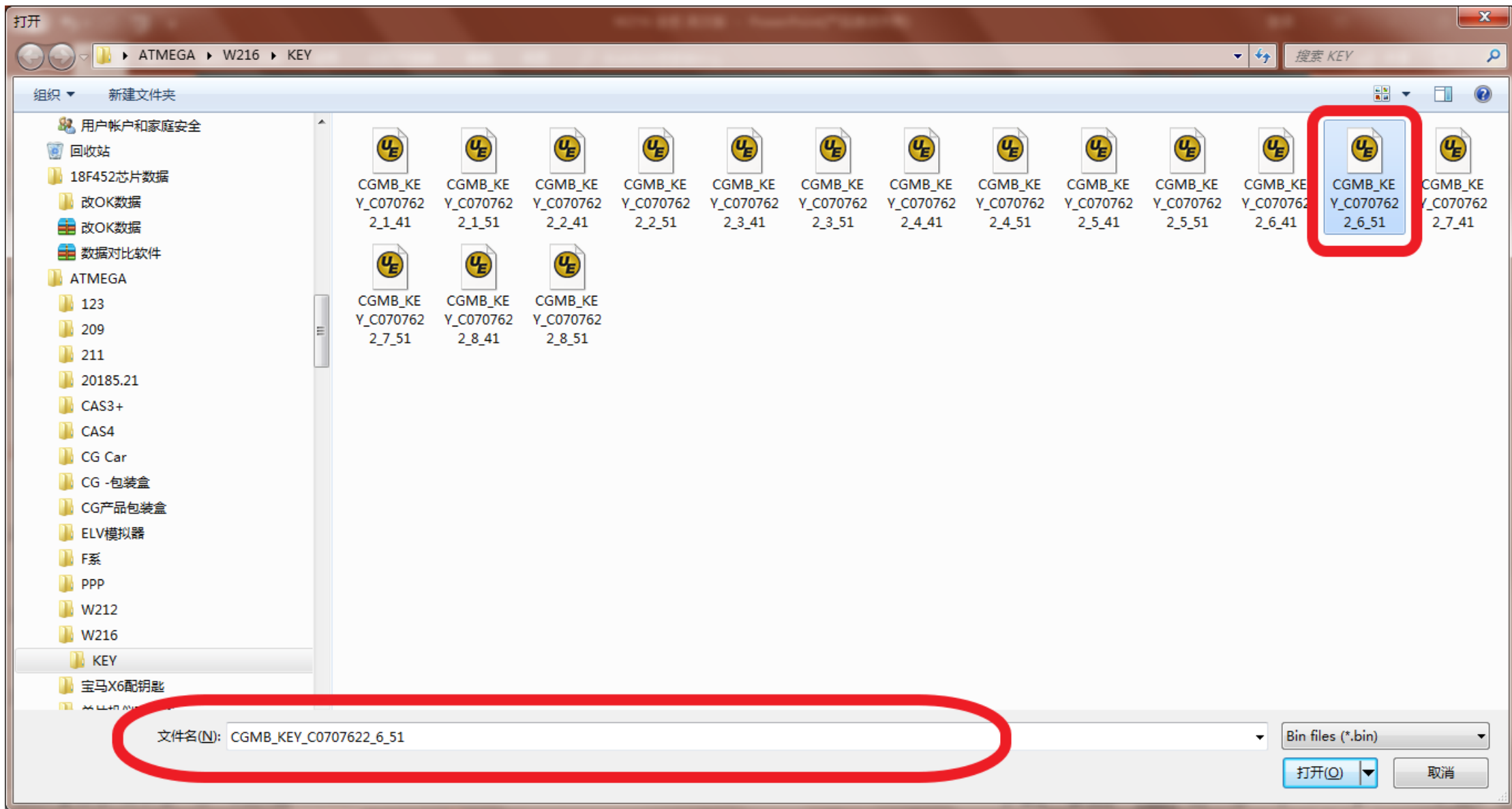
Current hash

Save BE File

Reset operation succeed!

Wipe out the key





Choose unused key data

- EIS
- Read/Write Key
- Compute Password
- Generate EE
- Auto Computer
- ELV

### Key Basic Information

SSID	Position
Available times	State <span>Activate</span>
Times used	Version
Key password <span>Copy</span>	<span>Copy</span>

```

00000000 01 4D 8D A0 4C CA ... L ... h
00000010 58 36 F9 FA 13 FC ... b J
00000020 E0 11 1B D9 1A FE ... & g
00000030 35 9F D5 C2 5B 2E ... [ ... R
00000040 26 FC C2 7A 31 5A ... z 1 Z ... +
00000050 F8 9F D7 1F 00 70 5B 07 51 2D 2D AD 4D 7C E1 BB ... p [ . Q
00000060 8D 86 30 14 8C D0 38 78 88 7F FF FF FF FF FF ... 0 ... 8 x .
00000070 FF FF FF E3 3B DE 28 2F 8D DE EE 7F FF 00 00 02 ... ( / .
00000080 FF FF FF FF FF FF FF 4D 09 11 29 C5 70 76 22 ... M
00000090 01 01 01 01 FF FF FF FF 73 0C FF FF FF FF 04 FC ... s

```

- ### Interface:
- Infrared
  - NEC Adapter
- Read Key/Chip
- Reset
- Open/Write
- Current hash
- Save BE File



Write success!

Write success



Learning on car

CGDI-MB OAS 4 20 85

**EIS**

Read/Write Key

Compute Password

Generate EE

Auto Computer

ELV

### EIS Basic Information

SSID: CO 70 76 22 VIN: WDDNG9FB8AA354302 Write

EIS number: 2169050000 Mileage: 0 KM

The last key used: 6

The penultimate used: Unused

Allow Modify

### EIS Key Basic Information

Key	Hex	Used	Disabled
Key 1	24 4F DD FO 8B 82 E7 DB	<input checked="" type="checkbox"/>	<input type="checkbox"/>
Key 2	BA 95 E6 41 84 82 2A 2A	<input checked="" type="checkbox"/>	<input type="checkbox"/>
Key 3	16 25 7A 9F B1 22 BB D9	<input checked="" type="checkbox"/>	<input type="checkbox"/>
Key 4	60 D9 56 18 F8 C2 CF 44	<input checked="" type="checkbox"/>	<input type="checkbox"/>
Key 5	4F 4C 4C 32 5E 9D C4 98	<input checked="" type="checkbox"/>	<input type="checkbox"/>
Key 6	38 D0 8C 14 30 86 8D BB	<input checked="" type="checkbox"/>	<input type="checkbox"/>
Key 7	FF D4 F5 91 D0 E2 9D 6F	<input type="checkbox"/>	<input type="checkbox"/>
Key 8	C7 EC B2 A0 C3 3B 7F A1	<input type="checkbox"/>	<input type="checkbox"/>

Key password: Copy Paste

Special key: 03 6C 9C 1A 12 26 7F 96

Erase password: Get

Enable Password: Get

Initialized  Personalized

TP cleared  Activated

Dealer EIS  FBS4

Read EIS Data

Save EIS Data

Load EIS Data

Write EIS Data

Wipe the EIS

Clear TP Protection

Activate EIS

Disable Enable

Sync W204 ELV

Read success!

Read the EIS data again, show the key data was used, combine the new key can get on car ,match successfully !