

M6+ Mercedes-Benz and BMW configuration

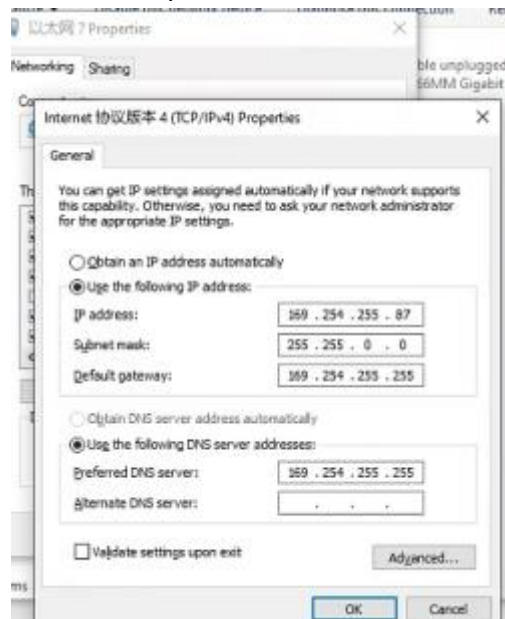
1. Plug the M6+ into the power supply or connect the OBD to the test vehicle, and plug in the USB cable of the M6+.



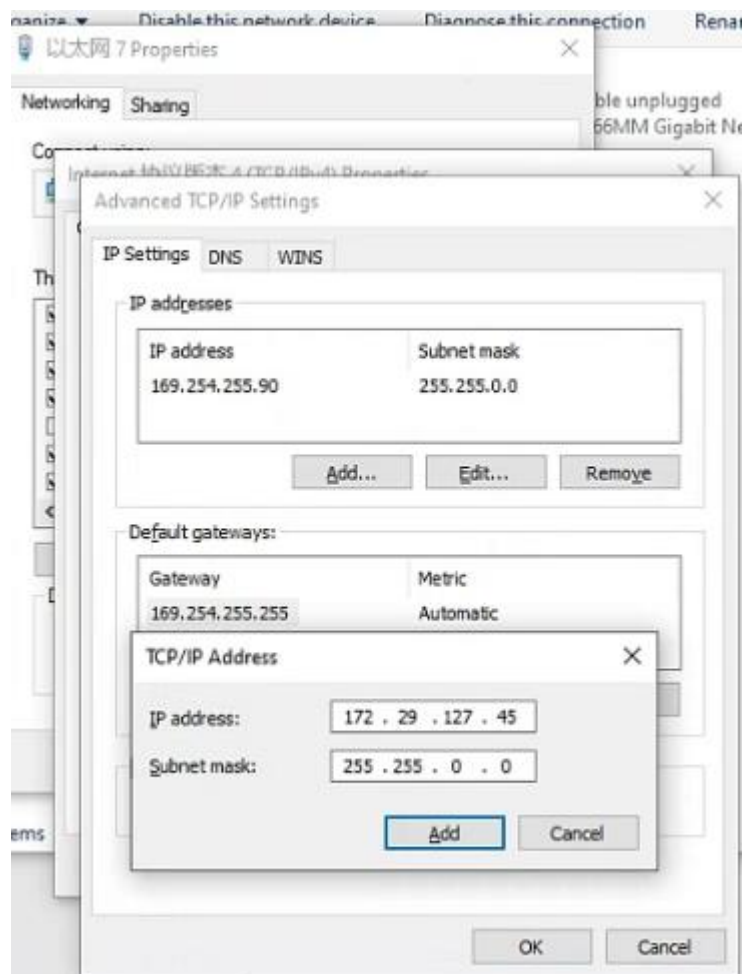
2. Turn on the computer and plug in the computer USB cable.
3. Open the computer network configuration interface and find the **Realtek USB FE Family Controller network**



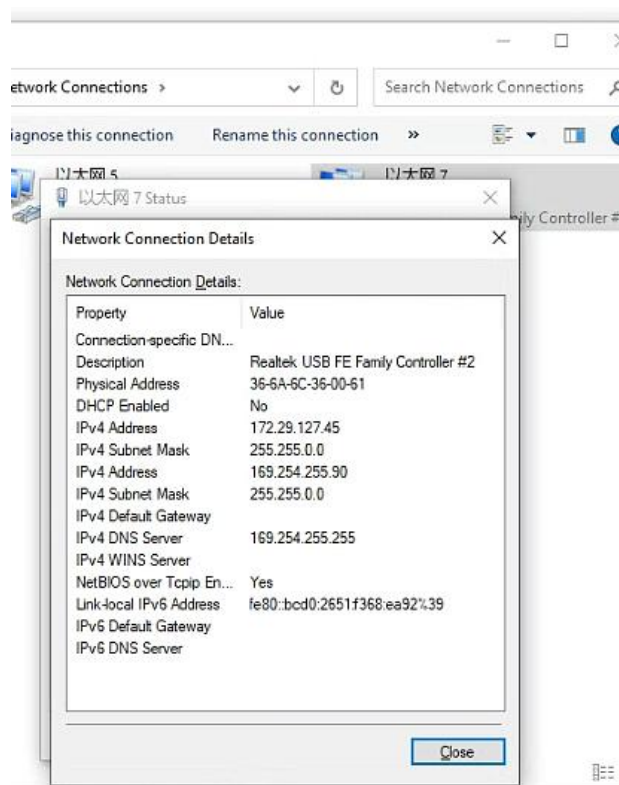
4. Click "Properties"--TCP/IPV4, and set the IP address as shown in the figure below.



5. Click "Advanced", and add a group of network IP addresses as shown in the figure below.



6. Click "OK". After the configuration is successful, the display is as follows.



7. For the same computer, if you replace a new M6+, you need to reset the IP address. After the setting is completed, the computer is successfully bound to the M6+ and there is no need to set the IP address again for wired and wireless Internet access.

8. You can test Mercedes-Benz normally.

9. BMW wireless BMWAiCode configuration

Connect to the M6+ DOIP-***, password: 123456789, wirelessly, press and hold the M6+ switch button for 3 seconds, and the M6+ host wireless indicator will flash. The computer-side BMWAiCoder configuration is as follows:



ENET

Scan IP: 172.29.127.255 默认:169.254.255.255

Scan Port: 6811 默认:6811

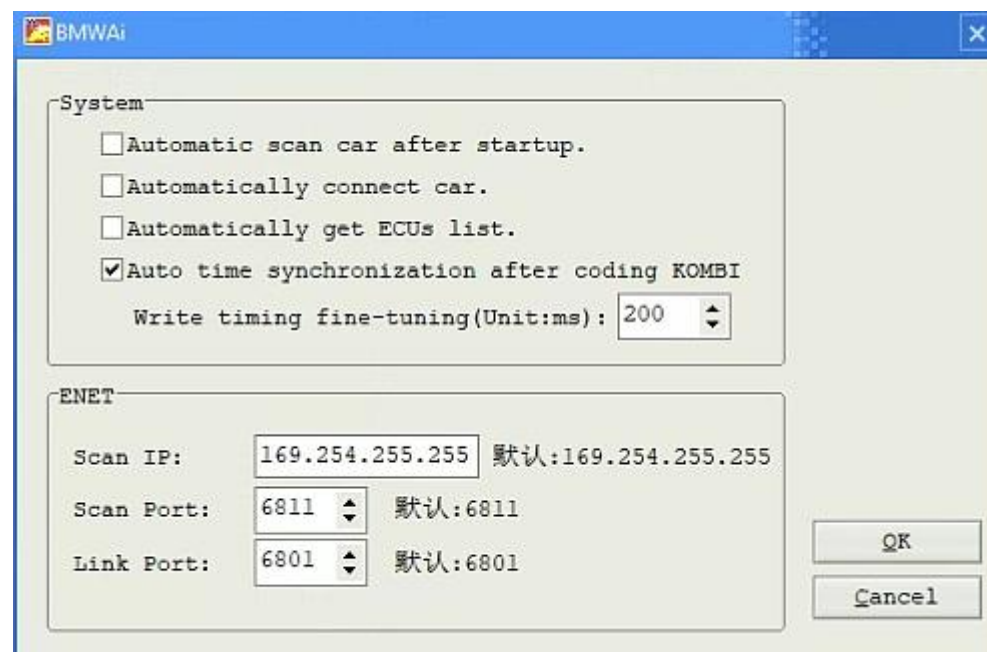
Link Port: 6801 默认:6801

OK

Cancel

10. BMW wired BMWAiCode configuration

Connect the USB cable, press and hold the M6+ switch button for 3S, and the M6+ host wired indicator light will flash. The computer-side BMWAiCoder configuration is as follows:



BMWai

System

Automatic scan car after startup.

Automatically connect car.

Automatically get ECUs list.

Auto time synchronization after coding KOMBI

Write timing fine-tuning(Unit:ms): 200

ENET

Scan IP: 169.254.255.255 默认:169.254.255.255

Scan Port: 6811 默认:6811

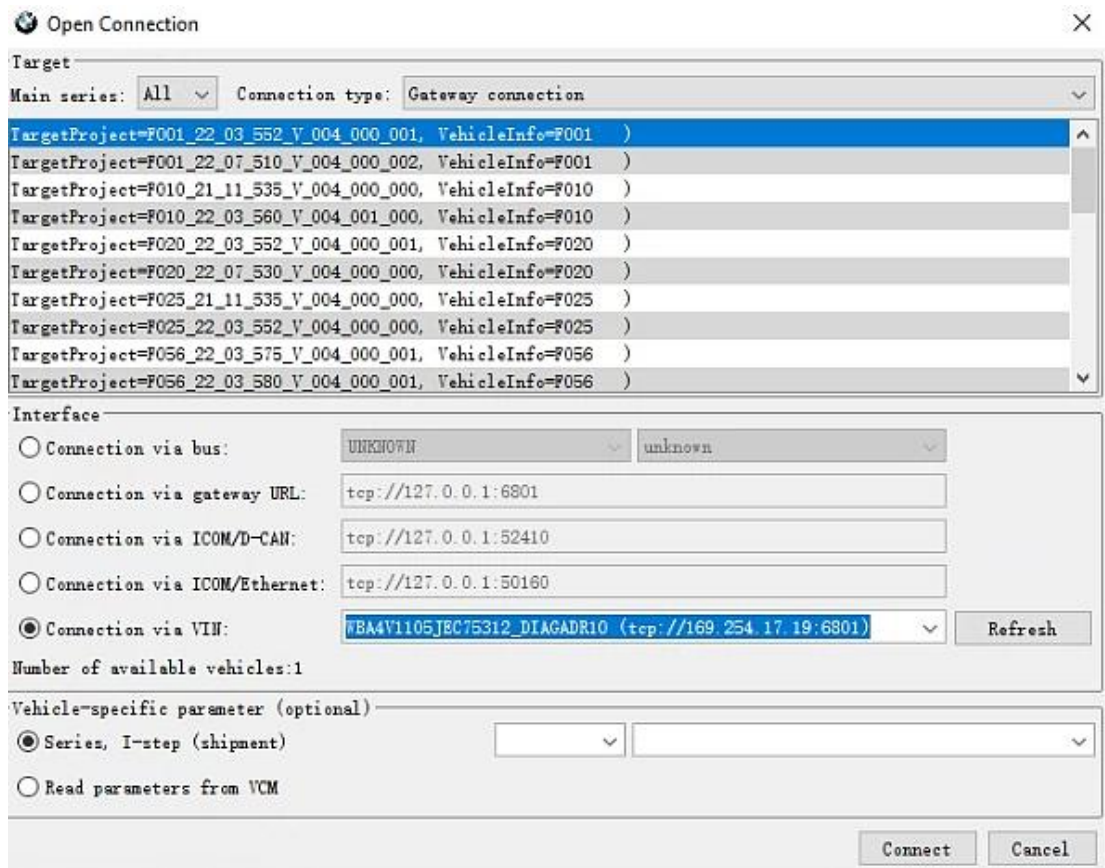
Link Port: 6801 默认:6801

OK

Cancel

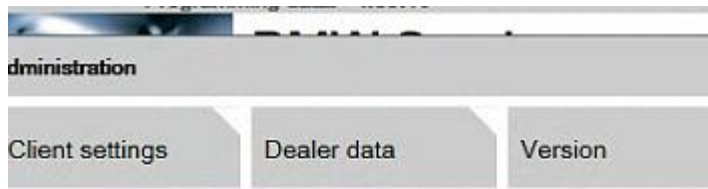
11. BMW wired and wireless E-Sys configuration

Connect to the M6+ DOIP-*** wirelessly, press and hold the M6+ switch button for 3 seconds, and the M6+ host wireless indicator will flash. On the computer side, select the following for direct connection. Wired is similar, no setup required.



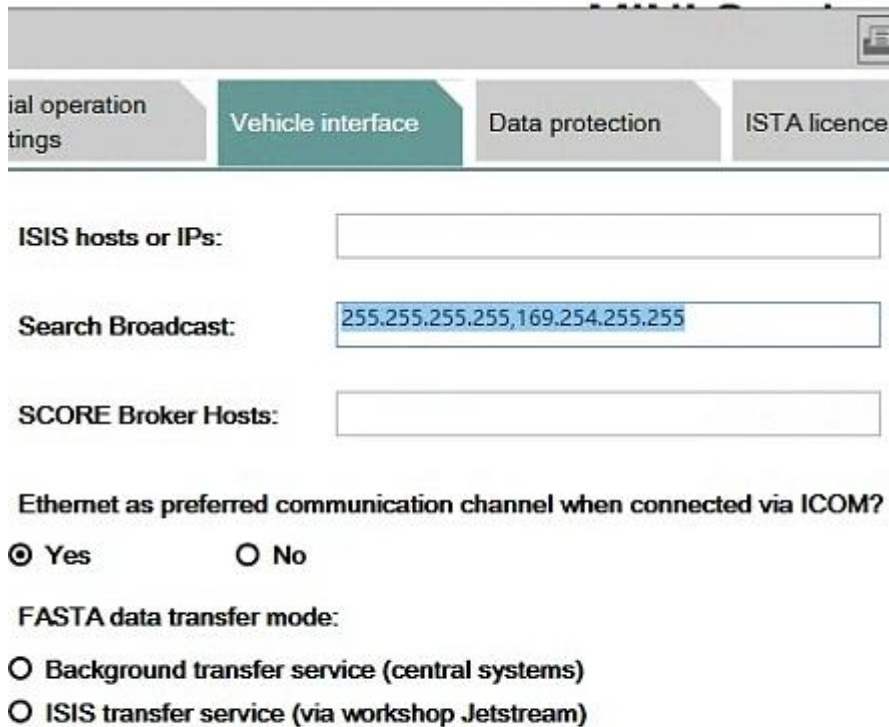
12. BMW wired ISTA configuration

Connect the USB cable, press and hold the M6+ switch button for 3S, and the M6+ host wired indicator light will flash. The computer ISTA configuration is as follows:



Interface type:

- Pass-Thru tool (SAE J2534)
- Ediabas default settings (ediabas.ini)
- OMITEC interface (USB / serial)
- Dealer organisation ICOM / ENET local area network
- Dealer organisation ICOM / ENET direct connection
- Simulation

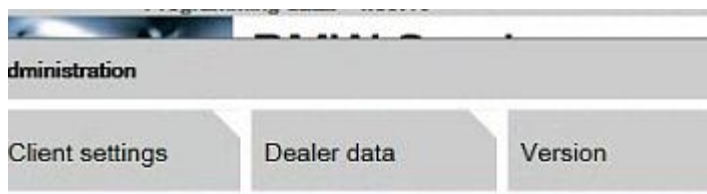


Vehicle interface configuration options:

- ISIS hosts or IPs:
- Search Broadcast:
- SCORE Broker Hosts:
- Ethernet as preferred communication channel when connected via ICOM?
 - Yes
 - No
- FASTA data transfer mode:
 - Background transfer service (central systems)
 - ISIS transfer service (via workshop Jetstream)

13. BMW Wireless ISTA configuration

Connect to the M6+ DOIP-*** wirelessly, press and hold the M6+ switch button for 3 seconds, and the M6+ host wireless indicator will flash. The computer side is selected as follows:

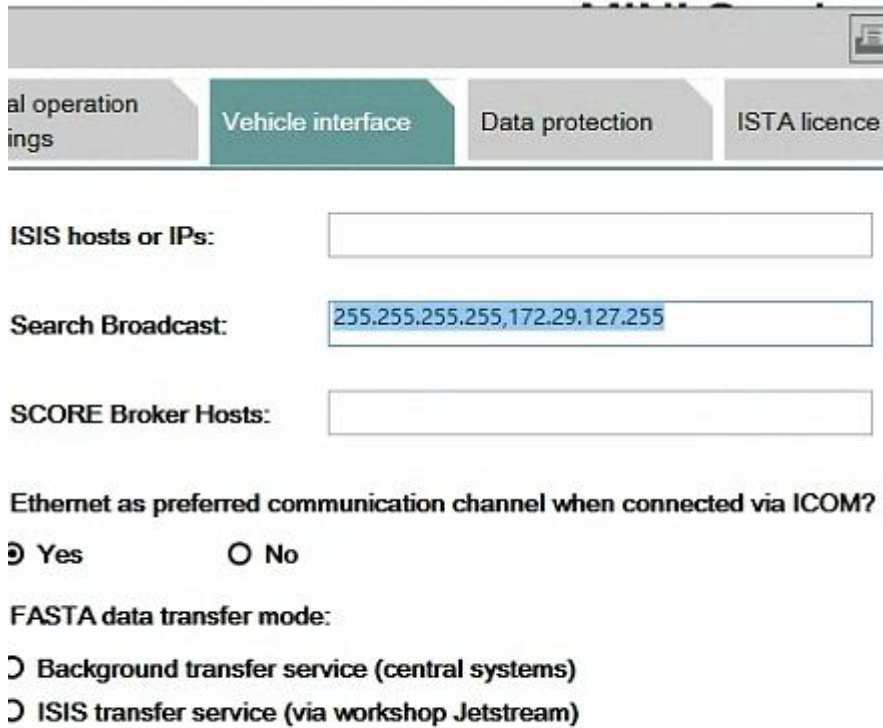


Administration configuration options:

- Client settings
- Dealer data
- Version

Interface type:

- Pass-Thru tool (SAE J2534)
- Ediabas default settings (ediabas.ini)
- ~~OMITEC interface (USB / serial)~~
- Dealer organisation ICOM / ENET local area network
- Dealer organisation ICOM / ENET direct connection
- Simulation



al operation
ings

Vehicle interface

Data protection

ISTA licence

ISIS hosts or IPs:

Search Broadcast:

SCORE Broker Hosts:

Ethernet as preferred communication channel when connected via ICOM?

Yes No

FASTA data transfer mode:

Background transfer service (central systems)

ISIS transfer service (via workshop Jetstream)

14. The mobile phone BWM APP adopts wireless connection. Connect to the M6+ DOIP-***, password: 123456789, press and hold the M6+ switch button for 3 seconds, and the M6+ host wireless indicator will flash.